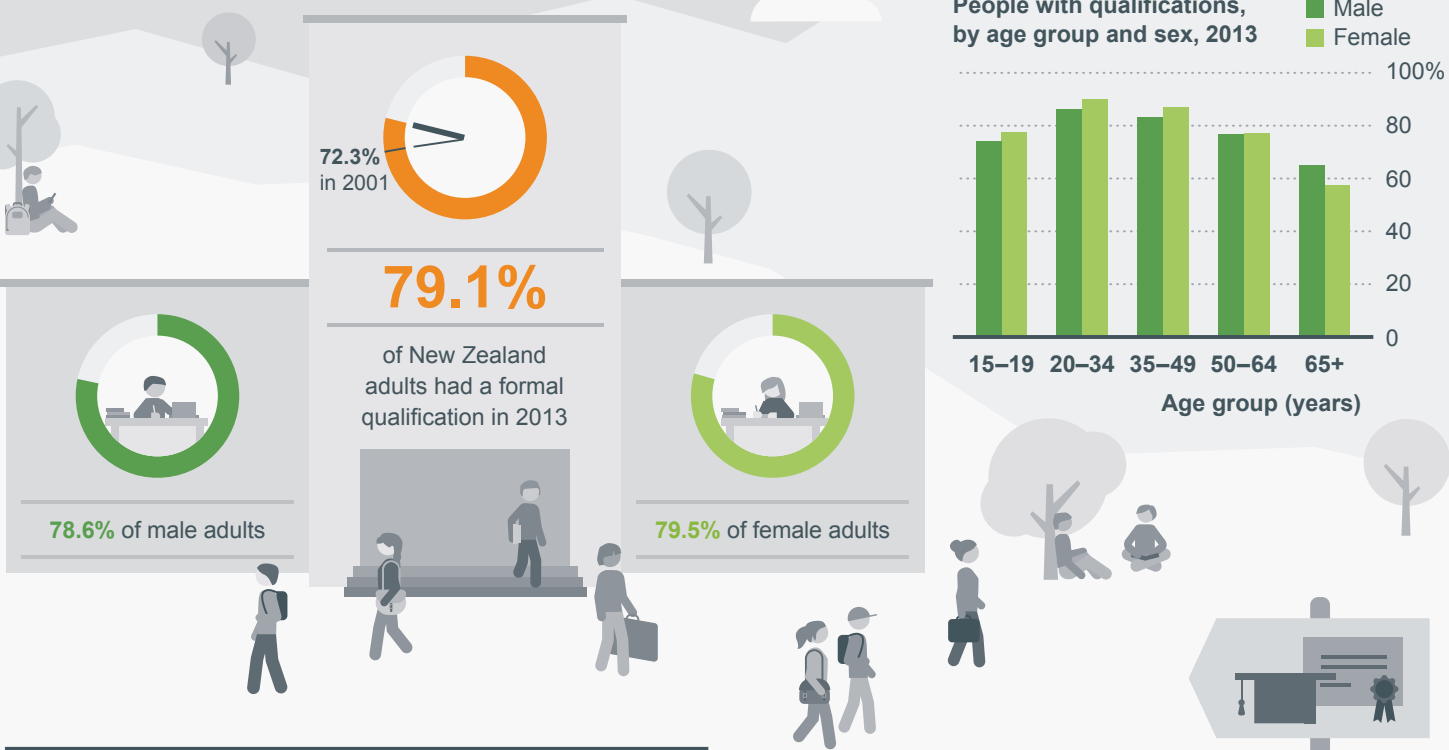


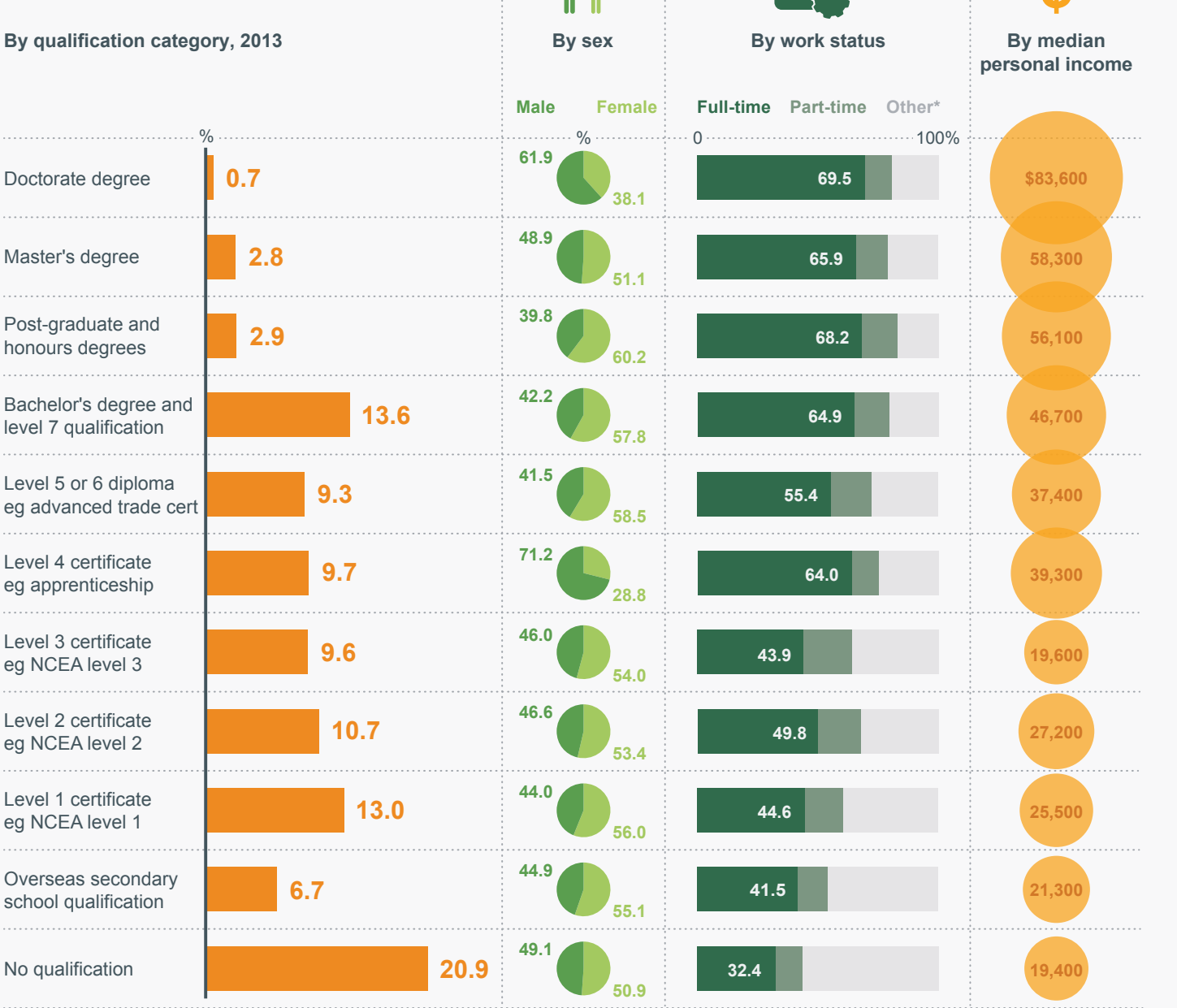
People with qualifications

For New Zealand adults aged 15 years and over



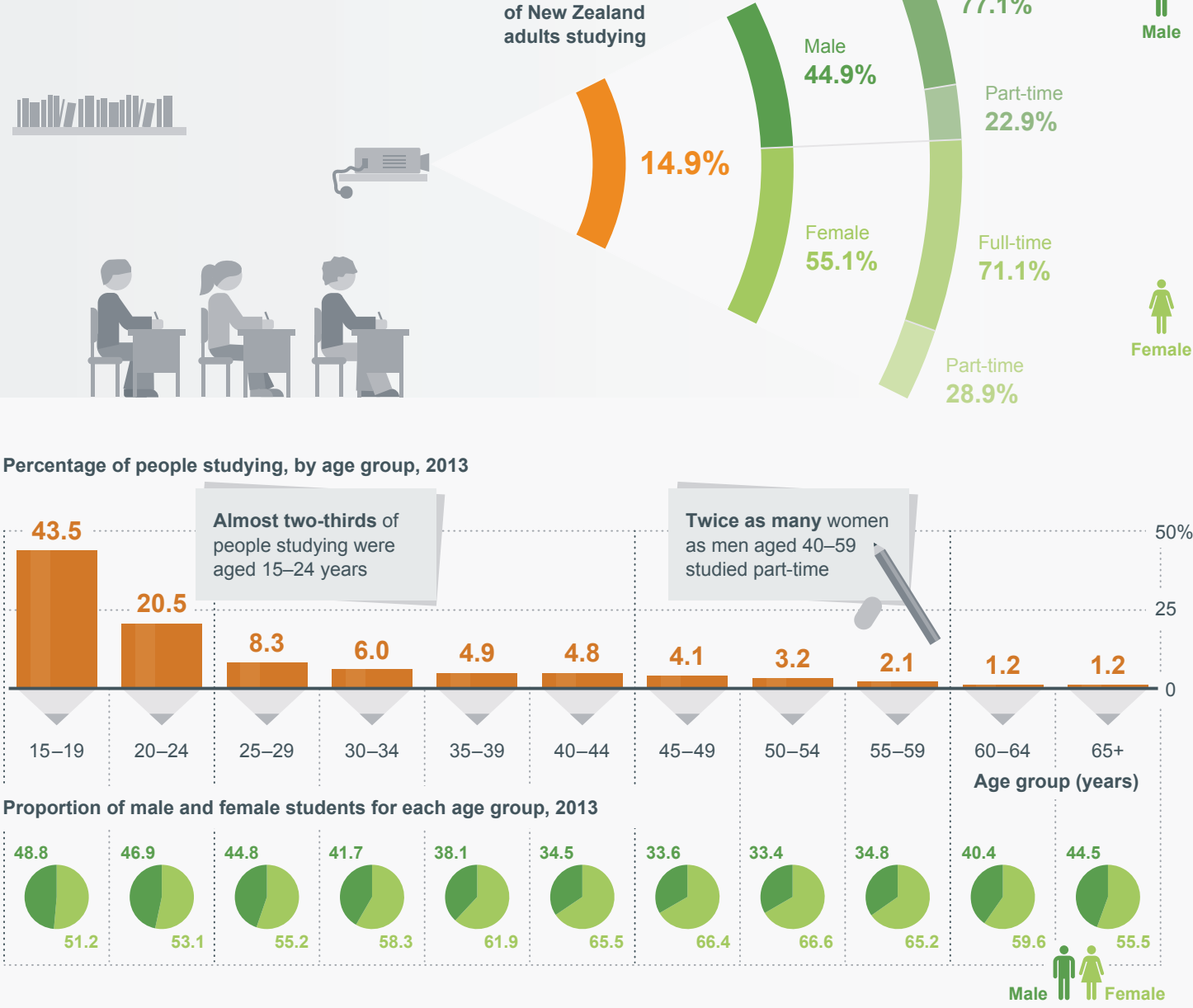
Highest qualification

For New Zealand adults aged 15 years and over

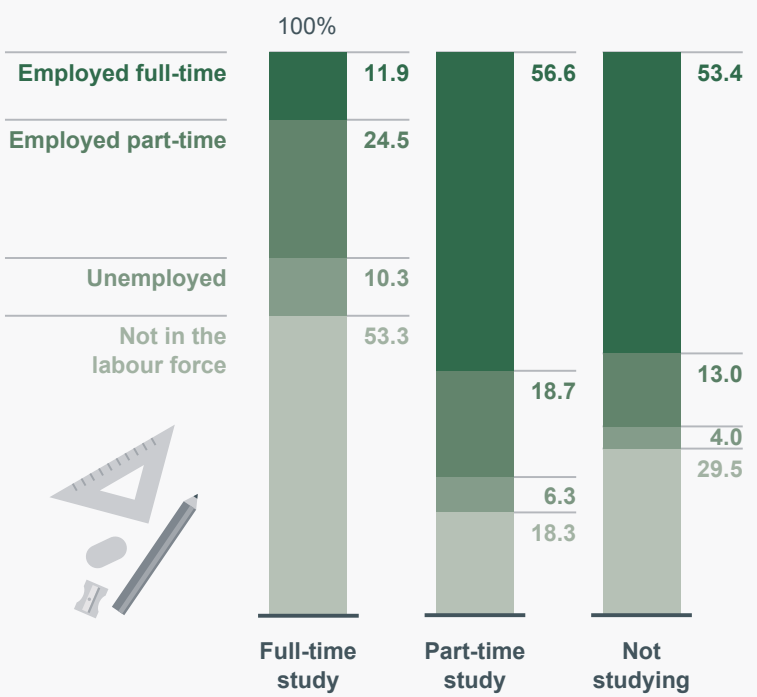


Study participation

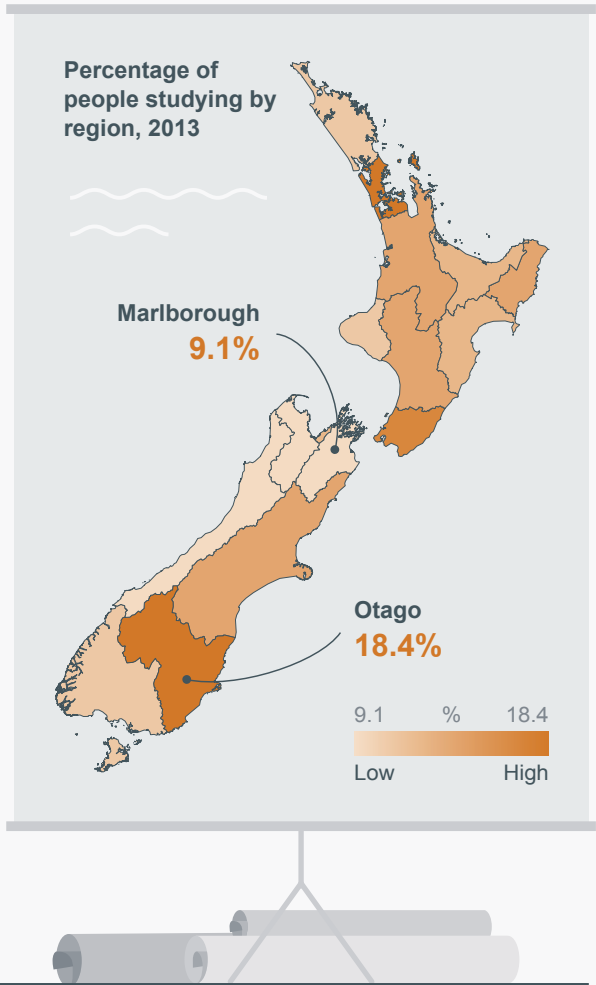
For New Zealand adults aged 15 years and over



Study participation by work and labour force status, 2013

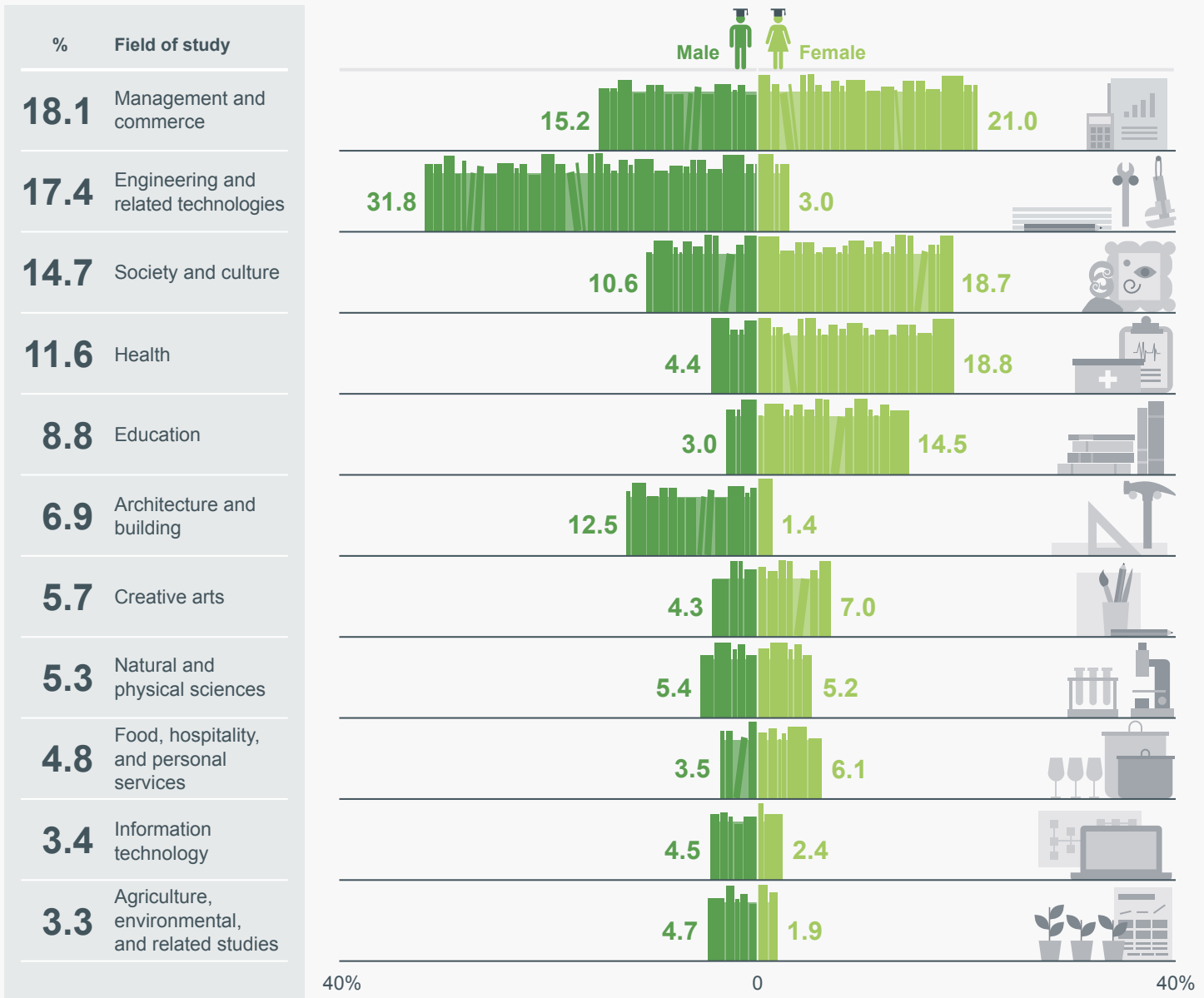


Percentage of people studying by region, 2013

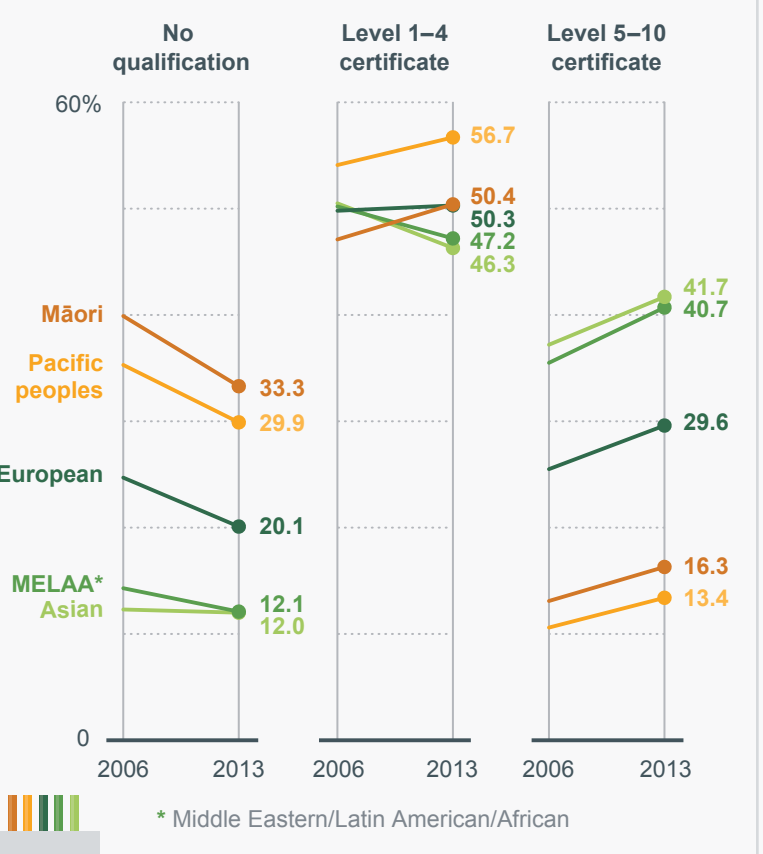


Post-school qualification field of study

For New Zealand adults aged 15 years and over who stated their field of study, by sex, 2013



Selected ethnic groups¹ by highest qualification (grouped categories)², 2006 and 2013



1. Ethnic groups: People reporting more than one ethnic group were counted in each stated category.

2. Level 1-4 includes: Levels 1-4 certificates, and overseas secondary school qualifications. Level 5-10 includes: Levels 5 and 6 diplomas, bachelor's degree and level 7 qualification, post-graduate and honours degrees, master's degree, and doctorate degree.

The proportion of Māori with a bachelor's degree or level 7 qualification increased from 5.5 percent in 2006, to 7.5 percent in 2013

The proportion of Pacific peoples with a bachelor's degree or level 7 qualification increased from 4.5 percent in 2006, to 6.2 percent in 2013

