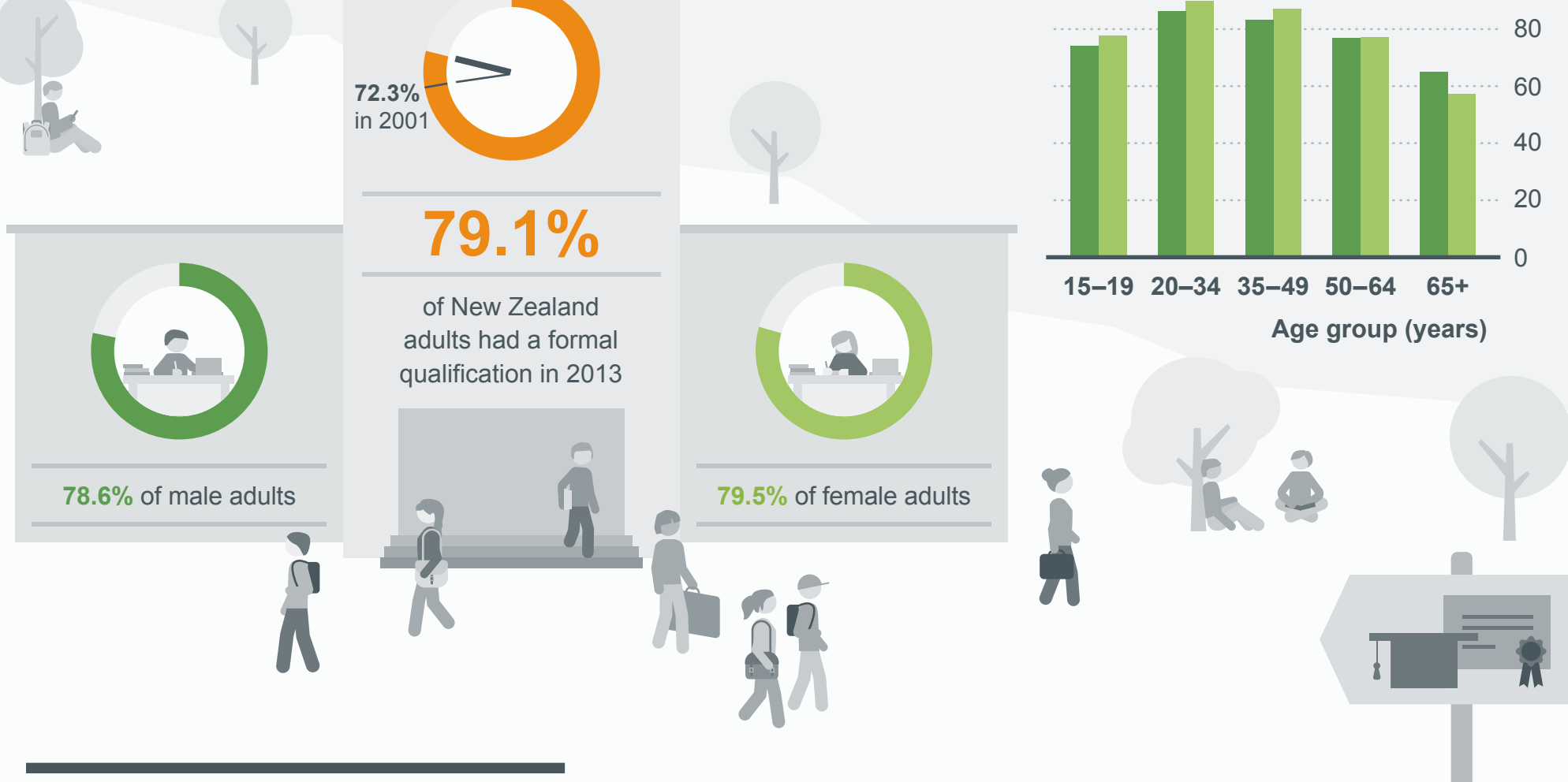


## People with qualifications

For New Zealand adults aged 15 years and over

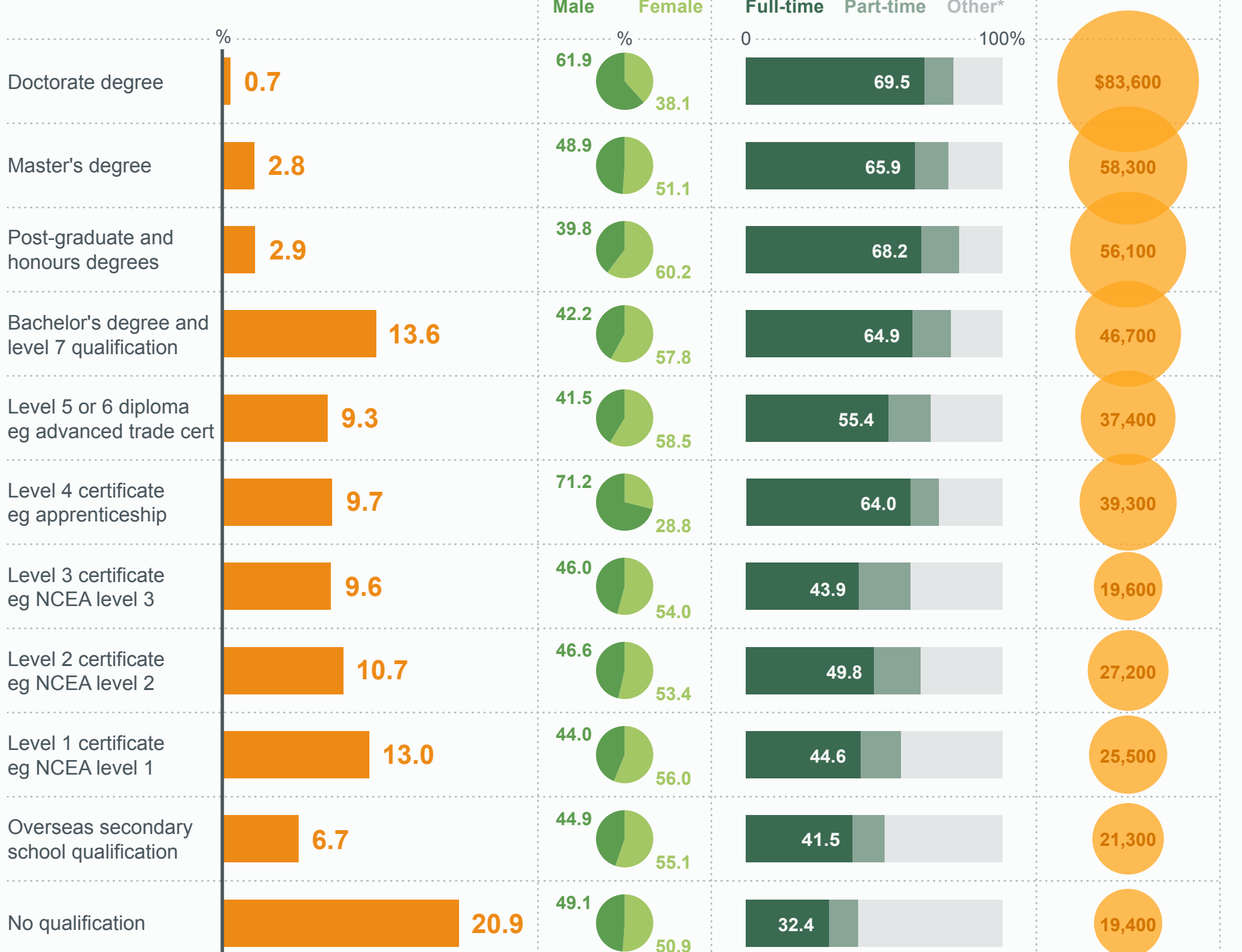
Older people are less likely to have a formal qualification



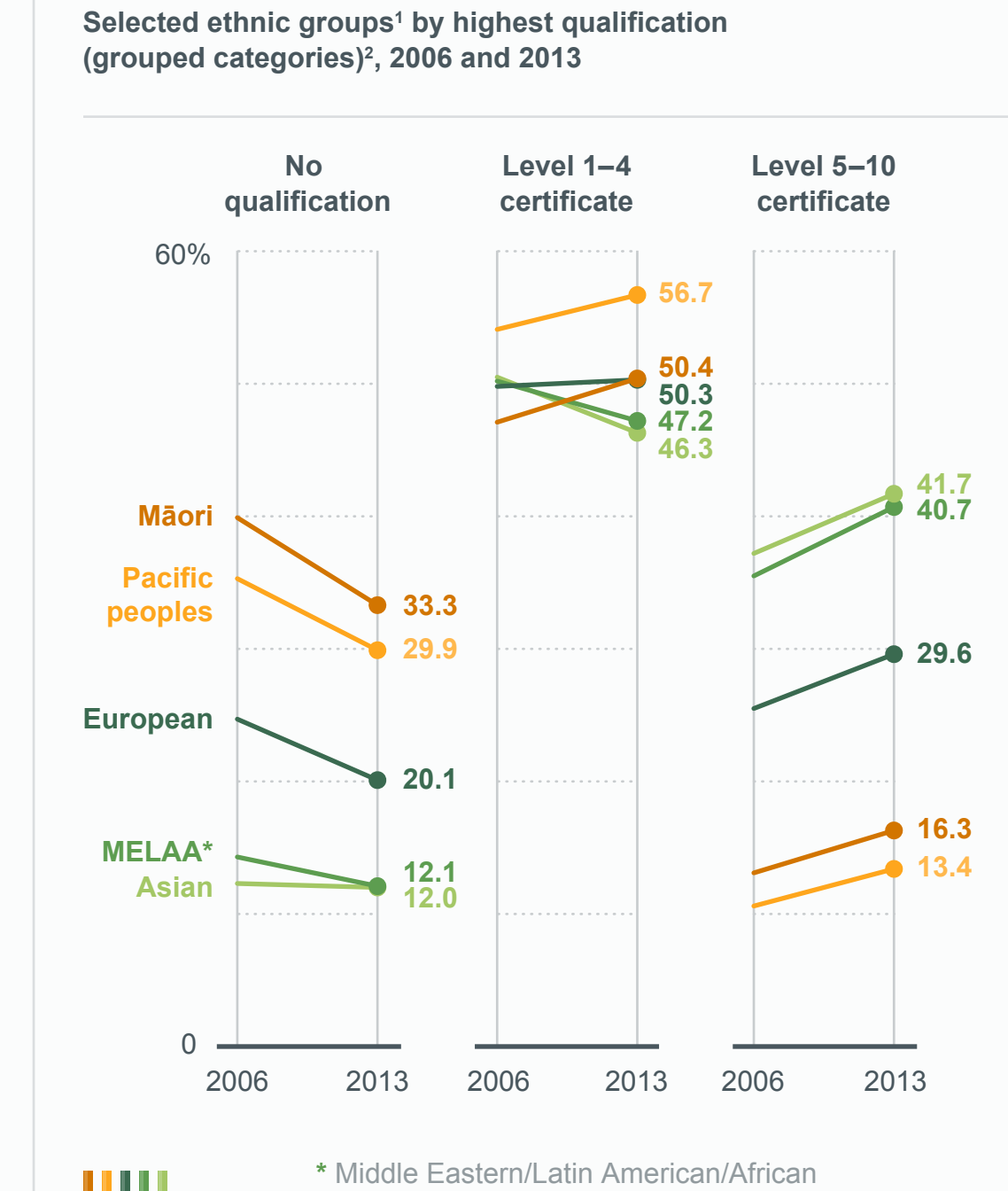
## Highest qualification

For New Zealand adults aged 15 years and over

By qualification category, 2013

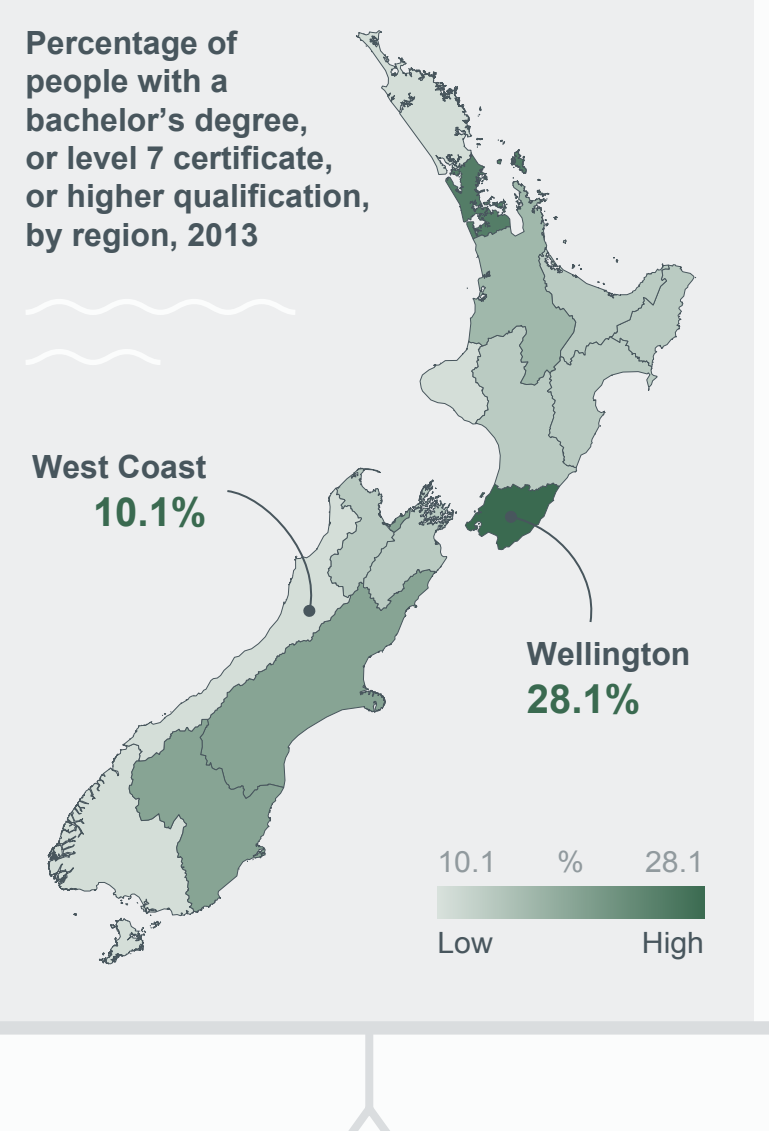


## Selected ethnic groups<sup>1</sup> by highest qualification (grouped categories)<sup>2</sup>, 2006 and 2013



The proportion of **Māori** with a bachelor's degree or level 7 qualification increased from 5.5 percent in 2006, to 7.5 percent in 2013

The proportion of **Pacific peoples** with a bachelor's degree or level 7 qualification increased from 4.5 percent in 2006, to 6.2 percent in 2013



1. Ethnic groups: People reporting more than one ethnic group were counted in each stated category.  
2. Level 1-4 includes: Levels 1-4 certificates, and overseas secondary school qualifications. Level 5-10 includes: Levels 5 and 6 diplomas, bachelor's degree and level 7 qualification, post-graduate and honours degrees, master's degree, and doctorate degree.

## Post-school qualification field of study

For New Zealand adults aged 15 years and over who stated their field of study, by sex, 2013



## Study participation

For New Zealand adults aged 15 years and over

